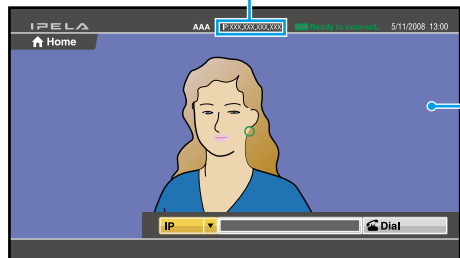


## Quick Connection Guide Using Direct Dial

For details on operations, refer to the Operating Instructions (stored in the supplied CD-ROM).

### To begin with

Turn on your HD Visual Communication System and TV monitor, and check the following to ensure that connection is possible.



- ② Is the IP address of the local system\* or the ISDN line number displayed?
- ① Is the picture of your camera (local picture) on the monitor screen?

**Note:** Connection to a remote party is not possible if neither the IP address \* nor ISDN line number is not displayed.

\* You can hide the IP address of the local system using the setup menu.

### Main indicators that appear during communication

	FAR	Controlling a remote camera
	NEAR	Local microphone is turned off.
		Presentation (transmission) is being executed.
		Presentation (reception) is being executed.
	NEAR	Local party has a drawing right of annotation.

↓ After checking...

### Let's connect



↑/↓/←/→ (arrow) buttons and ENTER button

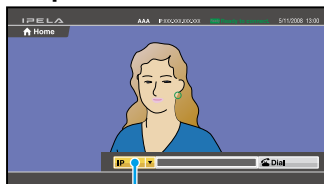
CONNECT button

BACK SPACE button

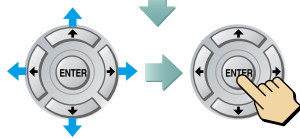
Buttons used for number input

DOT button

#### 1 Select the Line I/F and press ENTER.\*



Line I/F



Select the Line I/F to use.

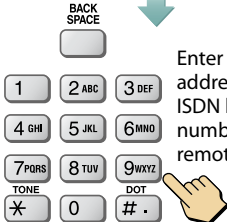
Press.

\* The Line I/F cannot be selected depending on the system setup.

#### 2 Select the number text box and press ENTER.



Number text box



Enter the IP address or ISDN line number of a remote party.

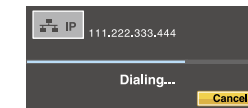
#### 3 Select "Dial" and press ENTER.



Dial

Or, press .

#### The system establishes communication.



# Remote Commander Guide: Operations available during communication

For details on operations, refer to the Operating Instructions (stored in the supplied CD-ROM).

## Selecting the input picture

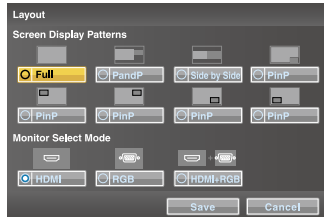
Press the VIDEO INPUT button to display the Video Input menu.  
Select the video input using  $\uparrow/\downarrow/\leftarrow/\rightarrow$  and ENTER buttons.



**CAMERA:** Video input from the camera connected to CAMERA connector  
**S VIDEO\*:** Video input from the camera or equipment connected to S VIDEO IN connector  
**RGB:** Video input from the equipment connected to RGB IN connector  
**YPbPr:** Video input from the equipment connected to VIDEO IN YPbPr jacks  
 \* This function is not available on the PCS-XG55/XG55S.

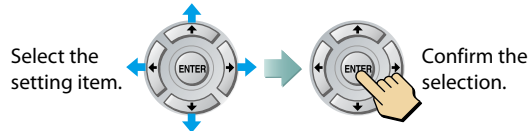
## Switching the picture on the TV monitor

Press the LAYOUT button to display the Layout menu.  
Select the screen display pattern of the local and remote pictures using  $\uparrow/\downarrow/\leftarrow/\rightarrow$  and ENTER buttons.



## Operating the menu

Select the setting item in the menu displayed on the screen, and confirm the selection.



## Transmitting a picture for presentation

You can transmit a picture from the computer connected to the RGB IN connector to a remote party.



## Adjusting the sound volume of the remote party

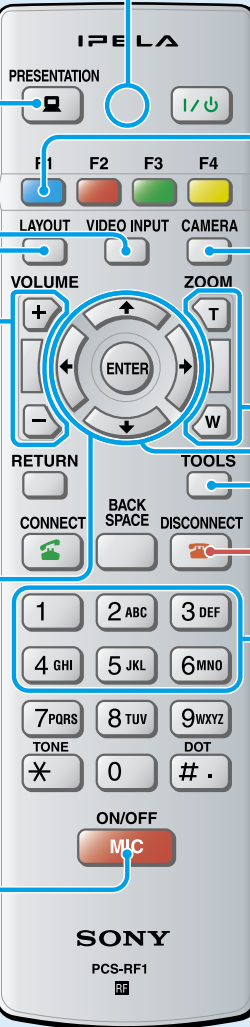
**VOLUME**  
 $\uparrow$  To increase the volume  
 $\downarrow$  To decrease the volume

## Switching on/off the local microphone

SONY  
PCS-RF1

ON/OFF  
MIC

LED



## Switching the local camera and remote camera to be controlled

## Displaying Camera menu

Press the CAMERA button to display the Camera menu.

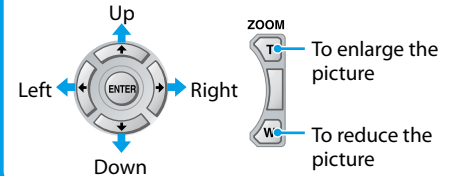


Select the menu item using  $\uparrow/\downarrow/\leftarrow/\rightarrow$  and ENTER buttons, and the selected adjustment menu is displayed.

**Adjustments:** for angle and zoom adjustments  
**Brightness:** for brightness adjustment  
**Preset:** for presetting and recalling the camera angle and zoom  
**Details:** for focus adjustment, white balance adjustment and backlight compensation, digital zoom, Bright Face and noise reduction filter functions

## Adjusting the camera angle and zoom

To move the camera angle



## Ending the communication and disconnecting



## Recalling the Preset Camera Angle

Select "Preset" in the Camera menu to display the Preset Setting List. Press button 1 to 6 to move the camera to the preset position.

## Displaying Tools menu

Press the TOOLS button to display the Tools menu.  
Select the menu item using  $\uparrow/\downarrow/\leftarrow/\rightarrow$  and ENTER buttons, and you can use the selected function such as "Annotation."

